

WOLVEY VILLAGE HALL FOUNDATION (CIO) (Charity No. 1193439)

WOLVEY VILLAGE HALL GRAND REOPENING EVENT

After four months of closure and the successful refurbishment of the Village Hall, we will be holding a **Grand Reopening Event at our Coffee Morning on Friday, 6 September 2024 between 10.30am and 12.30pm**. All members of the community are invited to come along and view the improvements and new layout of the Hall. Thanks go to all those who have supported us in raising the funds to achieve this refurbishment: Veolia; Green Shoots; Garfield Weston; the Platinum Jubilee Fund; Wolvey Parish Council; and generous donations from local community members both direct to the Village Hall and through our Just Giving page. We still have some fittings and furnishings to complete but are sure you will be delighted with the result. There will be lots of cakes and cups of tea and coffee available throughout the morning.

All donations received at this Coffee Morning will go directly to the Village Hall to help with our continuing fundraising.

A big thank you must be shouted out to all our volunteers, both Committee Members and families and Coffee Crew who have given their time freely and have worked tirelessly in fundraising. And to the Chairman, Treasurer and Secretary who spent hours sourcing, researching and applying for the grants and the Chairman who has visited the Hall most days throughout the refurbishment to ensure works were going to plan. There are too many people to name individually, but you know who you are and ...

THANK YOU!

Groups which have been relocated during the refurbishment will be returning from 7 September, so please check out what activities are on offer by visiting the "Clubs" page on our website. Also follow us on Facebook where we will be putting regular updates of "What's On".

Coffee Mornings

The July Coffee Morning raised £321.74 and the nominated charity was Zoe's Place.

We raised £390.50 at the August Coffee Morning and the supported charity was Parkinson's UK. We were delighted to welcome PCSO Steve who will hopefully be able to attend again at our opening event in September.

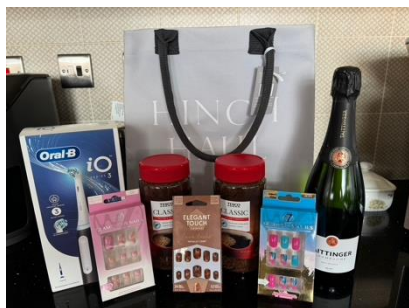
Those of you who regularly attend our Coffee Mornings will all know Jacqui Shayler (nee Anderson) who was such a popular member of our Coffee Crew and contributed so much to the Village Hall with her beautiful crafts and delicious cakes. Sadly, Jacqui passed away in June after a short battle with cancer, and a separate collection was held in her honour, the proceeds of which were donated to Myton Hospice. Anne White from Warm Hubs also attended and brought information leaflets on behalf of Myton Hospice who do so much more in addition to end of life care.



Level 2 Food Hygiene Training

Two of our members who have recently passed their Level 2 Food Hygiene Training spent time prior to the August Coffee Morning cascading and sharing the course content to other members of the Coffee Crew. We are always striving to improve our standards and knowledge for the benefit of the Hall and the community. We are also arranging for members to attend a basic First Aid course in October.

Raffle Prizes and Cakes



ASDA Community Champion, Hinckley, kindly contributed a bag of donations towards our raffle for August and we are always grateful for any donations we receive, both in the way of raffle prizes and cakes.

Forthcoming Events:

The **GARDEN AND PRODUCE SHOW** is on Sunday, 15 September and you can pick up a copy of the Schedule of Classes from Wolvey Stores or download a copy from our website under "News". Entry forms will be available at the Hall in the morning between 8.00am-10.30am when you bring in your entries. We are looking forward to receiving your entries, which don't have to be perfect or the best in class, it's the fun of taking part in this community event that's important and without you there is no show.



LIVE BAND, OFF THE CUFF will be performing for us once again on Saturday, 18 November. Further details will be circulated nearer the time.

Room Hire and Events

Find our up-to-date list of current classes and groups at our website under "Clubs" to see if there is something of interest to you. Now we have reopened with our improved facilities, perhaps you would like to start up a new group or class, or book one of our rooms for a private event. If so, you can check availability of the Hall and book through our website.

Contact us: www.wolveyvillagehall.co.uk admin@wolveyvillagehall.co.uk

<https://www.facebook.com/wolveyvillagehallfoundation>

